

CLPS Recombinant antibody

Cat: B36135S

Company: HaoKebio

Uniprot ID: P04118

Applications: IHC:1:4000-1:16000

Organism: Rabbit

IHC-Polymer:1:16000-1:60000

Species reactivity: Human Mouse Rat

IHC-TSA:1:20000-1:80000

Molecular Weight Calculation: 12 kDa

IF:1:200-1:800

Observed Molecular Weight: 12 kDa

WB:1:5000-1:50000

Background:

Pancreatic colipase is a 12-kDa polypeptide cofactor for pancreatic lipase (EC 3.1.1.3), an enzyme essential for the absorption of dietary long-chain triglyceride fatty acids. Colipase is thought to anchor lipase noncovalently to the surface of lipid micelles, counteracting the destabilizing influence of intestinal bile salts.

Synonyms:

Colipase, 241565H3

Immunogen:

Recombinant protein

Isotype:

IgG

Subcellular location:

Cytoplasm

Purity:

Affinity purification

Form:

Liquid

Storage Buffer:

PBS with 0.02% sodium azide, 100 µg/ml BSA and 50% glycerol.

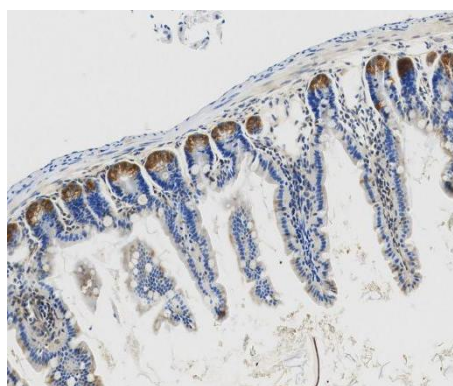
Storage:

Store at -20 °C for one year.

Experimental procedure:

Antigen retrieval: Citrate buffer (pH 9.0), Medium high heat for 8 minutes, stop for 7 minutes, medium high heat for 8 minutes. Incubate antibody,

4°C overnight. Secondary antibody: Poly-HRP Goat Anti-Rabbit & Mouse Universal Secondary Antibody, RT, 1h.

Images:


Sample: Mouse intestine, 4% PFA 12-24h

Source of Reagents:

发表[中文论文]请标注:CLPS(B36135S)由杭州浩克生物技术有限公司提供;

发表[英文论文]请标注:CLPS(B36135S) were kindly provided by Hangzhou Haoke Biotechnology Co., Ltd.