

NKp46/NCR1 Recombinant antibody

Cat: B36174S

Company: HaoKebio

Uniprot ID: Q9Z0H5

Applications: IHC:1:500-1:2000

Organism: Rabbit

IHC-Polymer:1:2000-1:8000

Species reactivity: Mouse Rat

IHC-TSA:1:2500-1:10000

Molecular Weight Calculation: 37 kDa

IF:1:50-1:100

Observed Molecular Weight: 50-60 kDa

WB:1:1000-1:4000

Background:

NKp46, also known as NCR1 or CD335, is an Ig-like superfamily cell surface receptor that is highly conserved in mammals. NKp46 is a type I transmembrane glycoprotein consisting of two extracellular Ig-like domains, a transmembrane domain, and an intracellular tail. It is expressed on NK cells, rare T-cell subsets, and a mucosal population of NKp46+ innate lymphoid cells. NKp46 is the major triggering receptor involved in the natural cytotoxicity.

Synonyms:

241811H7, Activating receptor 1, Ar1, CD335, Klr1

Immunogen:

Recombinant protein

Isotype:

IgG

Subcellular location:

Membrane

Purity:

Affinity purification

Form:

Liquid

Storage Buffer:

PBS with 0.02% sodium azide, 100 µg/ml BSA and 50% glycerol.

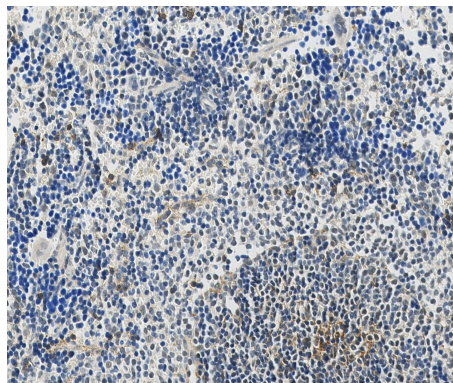
Storage:

Store at -20 °C for one year.

Experimental procedure:

Antigen retrieval: Citrate buffer (pH 9.0) , Medium high heat for 8 minutes, stop for 7 minutes, medium high heat for 8 minutes. Incubate antibody, 4°C overnight. Secondary antibody: Poly-HRP Goat Anti-Rabbit & Mouse Universal Secondary Antibody, RT, 1h.

Images:



Sample: Mouse spleen, 4% PFA 12-24h

Source of Reagents:

发表[中文论文]请标注:NKp46/NCR1(B36174S)由杭州浩克生物技术有限公司提供;

发表[英文论文]请标注:NKp46/NCR1(B36174S) were kindly provided by Hangzhou Haoke Biotechnology Co., Ltd.