

LRMP Recombinant antibody

Cat: B35037D

Company: HaoKebio

Uniprot ID: Q12912

Applications: IHC:1:100-1:200

Organism: Rabbit

IHC-Polymer:1:400-1:800

Species reactivity: Human

IHC-TSA:1:500-1:1000

Molecular Weight Calculation: 62 kDa

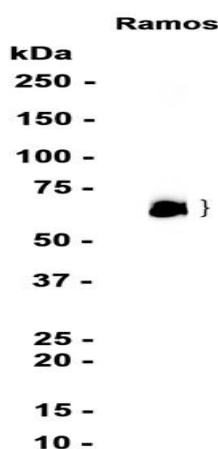
WB:1:1000-1:5000

Observed Molecular Weight: 62 kDa

Background:

The protein encoded by this gene is expressed in a developmentally regulated manner in lymphoid cell lines and tissues. The protein is localized to the cytoplasmic face of the endoplasmic reticulum.

4°C overnight. Secondary antibody: Poly-HRP Goat Anti-Rabbit & Mouse Universal Secondary Antibody, RT, 1h.

Images:

Protein full name:

Lymphocyte Antigen 6 Complex Locus M Protein

Synonyms:

JAW1

Immunogen:

Recombinant protein

Isotype:

IgG

Dilution of 1:5000 incubated at room temperature for 1.5 hours.

Subcellular location:

Cytoplasm

Source of Reagents:

发表[中文论文]请标注:LRMP(B35037D)由杭州浩克生物技术有限公司提供;

发表[英文论文]请标注:LRMP(B35037D) were kindly provided by Hangzhou Haoke Biotechnology Co., Ltd.

Purity:

Affinity purification

Form:

Liquid

Storage Buffer:

PBS with 0.02% sodium azide, 100 µg/ml BSA and 50% glycerol.

Storage:

Store at -20 °C for one year.

Experimental procedure:

Antigen retrieval: Citrate buffer (pH 9.0), Medium high heat for 8 minutes, stop for 7 minutes, medium high heat for 8 minutes. Incubate antibody,